



## NEWINGTON LONDON

3 Bedrooms

Apartment

Located in London

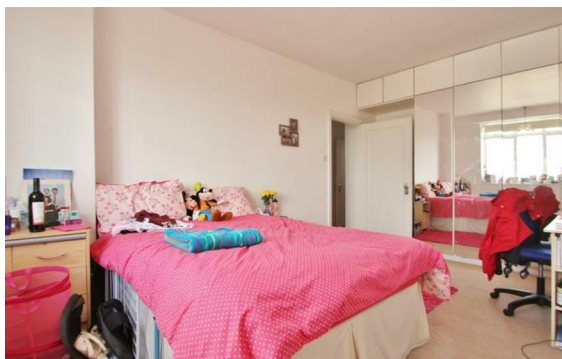
£1,040 Per Month



[info@newingtonstates.com](mailto:info@newingtonstates.com)

<http://www.newingtonstates.com>

020 7724 2233



A well-presented three bedroom apartment situated on the seventh floor of this portered building in Marylebone. Features stairs and lift service, large entrance hallway and a bright and spacious reception area with wooden flooring. This property comprises of three double bedrooms, a family bathroom, ample storage and benefits from a separate fitted kitchen with appliances.

Apartment is situated moments from London Business School and is within close proximity to Baker Street Station and Regents Park.

EPC rating: C

## Energy Efficiency Rating: C

Agents Note: Whilst every care has been taken to prepare these particulars, they are for guidance purposes only. All measurements are approximate and are for general guidance purposes only and whilst every care has been taken to ensure their accuracy, they should not be relied upon and potential buyers/tenants are advised to recheck the measurements.

# NEWINGTON LONDON

60 Upper Montagu Street

London

W1H 1SN

020 7724 2233

[info@newingtonstates.com](mailto:info@newingtonstates.com)

<http://www.newingtonstates.com>